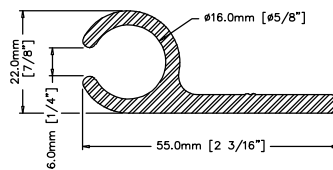
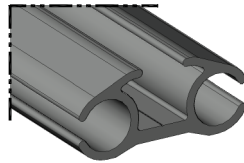
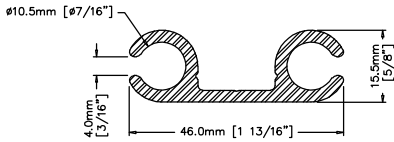
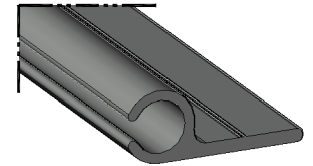


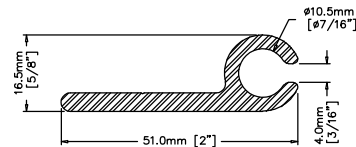
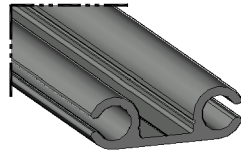
**13mm DOUBLE RAIL KEDER TRACK**  
 STOCK LENGTH = 20'-0"  
 STOCK NUMBER: EXT-005



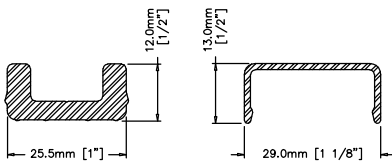
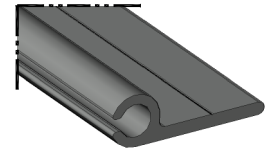
**13mm SINGLE RAIL KEDER TRACK**  
 STOCK LENGTH = 20'-0"  
 STOCK NUMBER: EXT-016



**7mm DOUBLE RAIL KEDER TRACK**  
 STOCK LENGTH = 20'-0"  
 STOCK NUMBER: EXT-012

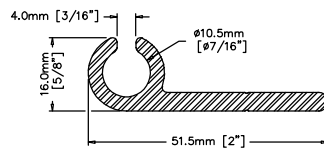
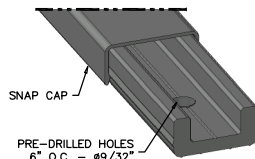


**7mm SINGLE RAIL KEDER TRACK**  
 STOCK LENGTH = 20'-0"  
 STOCK NUMBER: EXT-010

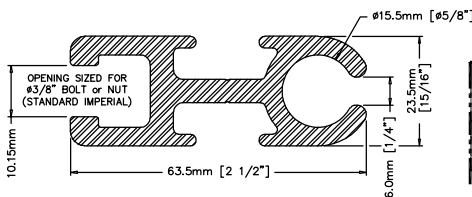
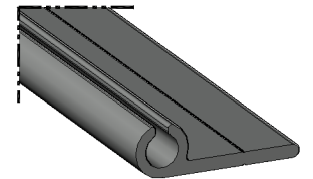


**TERMINATION BAR**  
 #9/32" HOLES ON 6" CENTERS  
 STOCK LENGTH = 12'-0"  
 STOCK NUMBER: EXT-006

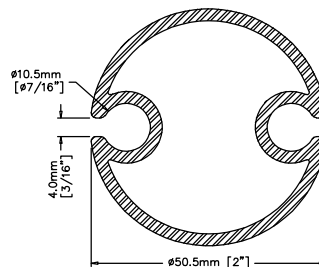
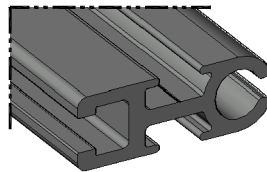
**SNAP CAP**  
 ALUMINUM 6063 T6  
 STOCK LENGTH = 12'-0"  
 STOCK NUMBER: EXT-007



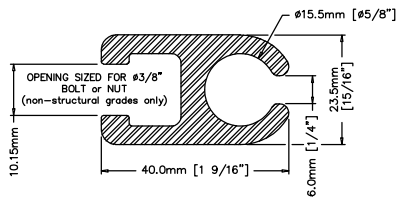
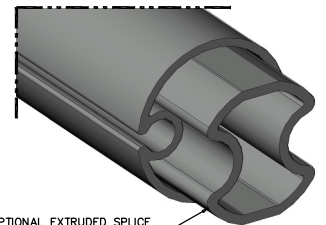
**7mm SINGLE RAIL 90° KEDER TRACK**  
 STOCK LENGTH = 20'-0"  
 STOCK NUMBER: EXT-031



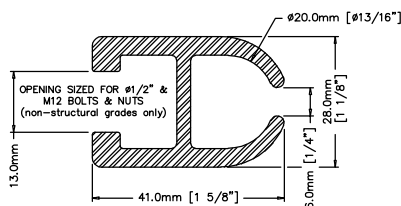
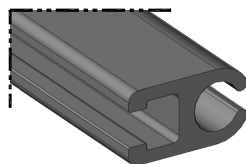
**13mm TENSIONING EXTRUSION LARGE**  
 STOCK LENGTH = 15'-0"  
 STOCK NUMBER: EXT-014



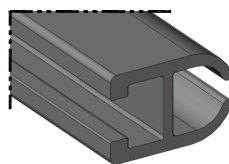
**7mm DOUBLE RAIL KEDER TUBE**  
 STOCK LENGTH = 20'-0"  
 STOCK NUMBER: EXT-009



**13mm TENSIONING EXTRUSION SMALL**  
 STOCK LENGTH = 15'-0"  
 STOCK NUMBER: EXT-015



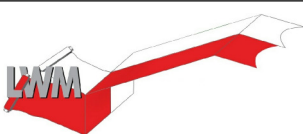
**TENSIONING EXTRUSION 1/2"**  
 STOCK LENGTH = 15'-0"  
 STOCK NUMBER: EXT-034



**PRICE LIST (each):**

STOCK NO.	DESCRIPTION:	QTY 1-24	QTY 25-99	QTY 100+	LENGTH
EXT-005	13mm DOUBLE RAIL				20'
EXT-006	TERMINATION BAR				12'
EXT-007	SNAP CAP				12'
EXT-009	7mm DOUBLE RAIL TUBE				20'
EXT-010	7mm SINGLE RAIL				20'
EXT-012	7mm DOUBLE RAIL				20'
EXT-013	EXTRUDED SPLICE TUBE				16'-2"
EXT-014	13mm TENSIONING LARGE				15'
EXT-015	13mm TENSIONING SMALL				15'
EXT-016	13mm SINGLE RAIL				20'
EXT-031	7mm SINGLE RAIL 90deg				20'
EXT-034	TENSIONING EXTRUSION 1/2"				20'
*	BAR & CAP SET				-

FOR PRICING PLEASE CONTACT YOUR SALES REP



**LIGHTWEIGHT MANUFACTURING Inc**  
 1139 SUMNER AVE  
 WHITEHALL, PA 18052  
 email: Sales@Lightweightmanufacturing.com  
 phone: (610) 435 4720  
 fax: (610) 465 8866

Prices are in US Dollars and are valid for 30 days  
 FOB Whitehall, PA 18052  
 Accepting Mastercard and Visa, or check with order (2% discount)

All Extrusion 6061 T6, MIL finish (unless noted)  
 Cutting Services Available. Additional charges may apply.

